

Welcome to Faizi Enterprises LLP



Faizi Enterprises LLP

Address : Shop No F-40, 1st Floor, Raghuleela Megha Mall, S.V Road, Behind Poisar Depot, Kandivali West, Mumbai 400067.

Mob : 9869852092 / 8898527268

Landline : 022-46199945

Email: faizienterprisesllp@gmail.com

Website : www.faizienterprisesllp.com

COMPANY PROFILE

About us

We are happy to introduce our self **(Faizi Enterprises LLP)** as one of the leading Service Provider in India. We Proudly state that Our Services are Best & Quality at all your requirements. We are in a position to provide all kinds of **Interior work, Supply and Erection of Workmen Colony, Store, Site office, Temporary Structure Repairing Works, Bricks work, Blocks work, Paver blocks, Plaster, PCC, RCC, Gypsum ceiling, Gypsum punning, ACP Paneling, Carpentry work, Drywall partition, Aerocon-Everest wall partition, MS Fabrication, Rolling Shutter, Painting works, Cladding, Soil filling, Reinforcement &UPVC Fins, etc.**

Qadri Enterprises Started New Firm Known as Faizi Enterprises LLp. So Now Both Qadri Enterprises & Faizi Enterprises LLP are Sister Company.

Why Choose us?

- Have a young in house experienced team for execution
- Seamless & hassle free 365 days support
- Promise on Quality & Delivery
- Association with Reputed Brands
- Capability to execute Pan India basis
- Believe in providing Value based services to the client

Speciality

We Proudly stated that our services are best & quality at all your requirements. We are in position to provide all kind of Interior work, bricks work, blocks work, paver blocks, Plaster, PCC, RCC, Gypsum ceiling, Gypsum punning, ACP Paneling, Carpentry work, Drywall partition, Everest /Aerocon, Solid wall partition, MS Fabrication, rolling shutter, Painting works, UPVC Fins Etc.

Interior Design work



What does an Interior Designer do? An Interior Designer creates practical and attractive spaces. They assess room needs, plan decor and furniture based on size and use, draft designs, and estimate costs. They also make sure to follow laws and rules for building plans and inspections. It is the art, science, and business planning of a creative, technical, sustainable, and functional interior solution that corresponds to the architecture of a space, while incorporating process and strategy, a mandate for well-being, safety, and health, with informed decisions about style and aesthetics.



Aerocon & Everest wall Portition



Aerocon Panels are manufactured from high-quality materials imparting adequate strength & long life. Cement-based products are as good as other conventional materials. Compressive Strength: 4.5 N/mm². Birla Aerocon Panels are cement sandwich panels, made of two fibre reinforced cement facing sheets, on either sides of a light-weight concrete core.



Aerocon panels offer many benefits, including being lightweight, easy to handle and install, fire-resistant, termite-resistant, and energy-efficient. They also have good sound insulation properties and are ideal for use in both commercial and residential construction.

Bricks Work, Paver Tiles, Block Work



Brickwork is masonry produced by a bricklayer, using bricks and mortar. Typically, rows of bricks called courses are laid on top of one another to build up a structure such as a brick wall. Bricks are small rectangular blocks that can be used to form parts of buildings, typically their walls. Bricks are most typically made from clay, although they are also commonly made from calcium-silicate and concrete. Where stability & durability are Important.

Painting Work



Painting, the expression of ideas and emotions, with the creation of certain aesthetic qualities, in a two-dimensional visual language. The elements of this language—its shapes, lines, colors, tones, and textures—are used in various ways to produce sensations of volume, space, movement, and light on a flat surface. How can you tell if your paintings are good? A Good work of art is usually the result of **great technical execution AND originality**. This means that in order to create great art you need to work hard to learn technical skills, but you also need to think in a unique way to create something original. Painting works means when contractors, usually termed 'painters and decorators', are directly engaged to paint indoor or external surfaces on a one-off, call down or cyclical basis, including ongoing maintenance and remedial works.



Gypsum Work



It is a crystalline mineral composed of calcium sulfate dihydrate. Gypsum helps in controlling the rate of hardening of the cement. It also prevents early hardening allowing long working time, hence we can say that it helps in the rapid setting of cement. Crude gypsum is used as a fluxing agent, fertilizer, filler in paper and textiles, and retarder in portland cement. About three-fourths of the total production is calcined for use as plaster of paris and as building materials in plaster, Keene's cement, board products, and tiles and blocks. gypsum. It is a mineral found in crystal as well as masses called gypsum rock. It is commonly known as Calcium sulfate dihydrate.

ACP Panelling, UPUC Find



Durability: ACP cladding sheet are durable, weather and stain resistant. Hassle-Free Maintenance: Aluminium Composite Panel allows hassle-free maintenance. Safe to use: Since aluminium does not burn, Aluminium Composite Panel offer a fireproof option. ACP sheet or Aluminum Composite Panel is a new-age cladding material that's used for building front elevation (facades), interiors, signage, modular kitchen and many more. VIVA's fire retardant ACPs are offered in three grades – Class B, Class A2+ and Class A2. The FR class B comprises 70% Mineral & 30 % Polyethylene recycled Core, whereas the FR class A2 includes 90% Mineral & 10 % Polyethylene recycled Core.

PCC, RCC



In summary, the main difference between PCC and RCC is that PCC is a type of plain cement concrete that does not contain reinforcing materials, while RCC is a type of reinforced cement concrete that includes reinforcing materials such as steel bars or mesh. What is PCC concrete details? The term PCC refers to plain cement concrete. The amalgamation of cement, fine aggregate, and coarse aggregate are known as plain cement concrete (PCC). Before beginning R.C.C. or masonry PCC is done to form an even surface and to avoid mixing with the soil and to avoid soil extracting water PCC is used.

MS Fabrication



MS Fabrication Work refers to the process of designing, manufacturing, and installing structures or components using Mild Steel (MS). It involves the fabrication of various metal structures, such as beams, columns, frames, stairs, platforms, and other customized metal products. Fabrication is the process of constructing products by combining typically standardised parts using one or more individual processes. For example, steel fabrication is the production of metal structures using a range of processes such as cutting, bending and assembling.

1. Our Completed Work



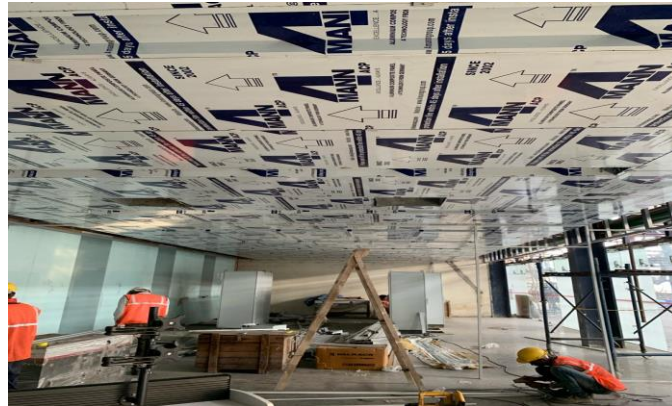
We have Completed Turnkey Project work, Project Office, Batching Plant and Sello Plant Fabrication Work at Mazagon for the Client Leighton India Contractors Private Limited .

2. Our Completed Work



We have Completed Labour Colony, Client Project office, Store, Lab, Fabrication & Interior work, at Vaikunth Thane & Junagar for the Client Tata Project Limited.

3. Our Completed Work



We have Completed the Interior work, Civil work, Aerocon panel work & Map work at Dolvi for the Client JSW Steel Limited.

4. Our Completed Work



We have Completed the Aerocon & Fabrication work at Goregaon for the Client Oberoi Realty Limited.

5. Our Completed Work



We have Completed the Everest Rapicon Panel work & MS Fabrication work at Mulund & Thane for the Client Runwal Developers Pvt Ltd.

Clients

We are registered with many Multinational organizations like execute Projects for these companies on a regular basis all over India.

- Lodha Developers limited
- JSW Steel Limited
- Larsen & Toubro Limited
- Raymond Limited (Realty Division)
- Runwal Developers Private Limited
- Tata Project Limited
- Oberoi Realty Limited
- Leighton India Contractors Private Limited
- Tata Housing Development Company Limited
- Talib and Shamsi Construction Private Limited



Faizi Enterprises LLP

**Address : Shop No F-40, 1st Floor, Raghuleela
Megha Mall, S.V Road, Behind Poisar Depot,
Kandivali West, Mumbai 400067.**

Mob : 9869852092 / 8898527268

Landline : 022-46199945

Email: faizienterprisesllp@gmail.com

Website : www.faizienterprisesllp.com

*Thank
you*

